



case study

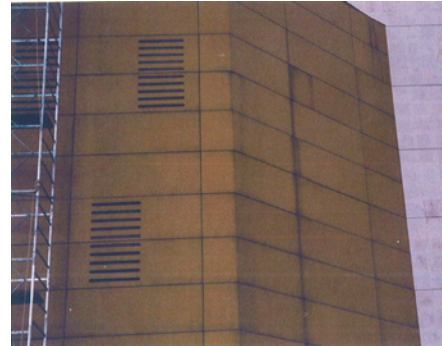


Project: PROTECTION AFTER CONSTRUCTION
Title: ABC DEPARTMENT STORE - LEBANON
Date: 2000 - 2005

ABC is known to be the first Department Store to open its doors in Lebanon and the Middle East. Dbayeh branch consists of a six-floor building with a surface of 6000sqm each.

The location of this branch is considered to be a highly polluted area, being on an international highway. Therefore, for 15 years, harsh chemicals were required to clean the glass regularly. Despite the frequent cleaning, the glass would quickly become dirty again, because of stains and contamination.

The introduction of ISO 9001 standards in 1990 meant that the building glass has to be cleaner in order to meet these standards. To achieve this, ClearShield was found to be a unique solution. ClearShield products prevent contaminants from bonding to the glass surface. Furthermore, ClearShield System is highly resistant to alkalinity from building run-off and hard tap water. It also provides protection against traffic film, fingerprints, bird droppings, tree sap, metal oxides, minerals salts/limescale moisture and silicone sealant run-off. ClearShield products can be applied either in the factory prior to the installation or onsite.



To meet and maintain the required ISO standards, the yearly cost exceeded \$ 10000. In 2000, ClearShield and Ritecoat - used for valpolic sheets - were used to prevent this expensive job. The cost of curing and maintaining the store for the next five years was only \$ 35000. The building can be simply cleaned now three times per year instead of ten times.

As a result, the glass and the yellow alpolic sheets are stain-resistant and easier to clean and looking pristine long after curing.



Damah Bldg, 7th floor, Kaslik HWY P.O.Box 1044, Jounieh, Lebanon

T +961 9 210956/7/9 F +961 9 221100 E sales@clearshieldtech.com W www.clearshieldtech.com

